

IN ALL THE WORLD



NO PRODUCTS LIKE THESE

CATALINA CLAY PRODUCTS



CATALINA 
CLAY
 PRODUCTS

MAKERS of the FAMOUS
CATALINA POTTERY

TILE TOP TABLES
WROUGHT IRON STANDS
LAMPS AND NOVELTIES

- AVALON -
SANTA CATALINA ISLAND
CALIFORNIA

INTRODUCTION

Catalina Island is unique in many respects. Not only is it a noted pleasure resort; but it also is a center for the manufacture of Spanish Potteryware, decorative tiles, and wrought-iron products.

The extensive clay deposits found on the Island yield a very fine quality of kaolin; the basic substance in clay which gives it plasticity when moistened. After molding into pottery and tile products, the ware is placed in kilns, or huge ovens, and burned to 2000 degrees Fahrenheit. Then it is dipped in various colored glazes and again fired to an intense heat. This completes the process and the ware is ready for use.

Catalina Pottery is distinctive in design and is widely used both for Spanish Gardens and Patios, as well as for beautifying interiors of homes. It is noted especially for the metallic luster given by the glazes, and for its freedom from crazing or minute-cracking found on most ware.

This booklet shows only a few of the many products manufactured. The Clay Factory is located at Pebbly Beach, one-half mile south of Avalon. At this plant, potteryware and building products, such as roof tile, hollow tile, brick and glazed tile are made and shipped to the Mainland. Two retail stores are situated in Avalon, where visitors to the Island may purchase souvenirs of their visit, that are truly representative of Catalina.

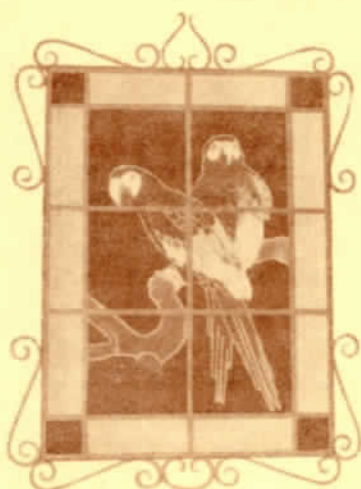
Information will be gladly given on request. Kindly address Casino Way Pottery Shop, Avalon, Calif.

PARROT PLAQUE

Decorative Tile Panel composed of 6x6 Glazed Tile with 2" border.

May be used either as a wall plaque or coffee table. Other Bird designs and Marine scenes available.

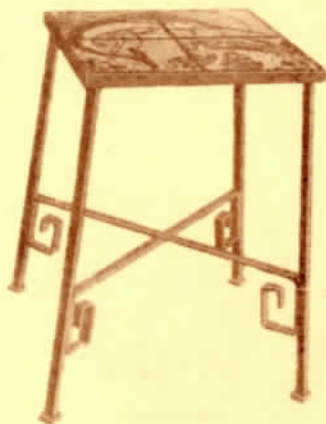
Cat. No. I-1



SWORDFISH TABLE

A very popular table with sportsmen. The four-piece tile top may also be obtained separately for other uses.

Cat. No. I-98



SPANISH FLOWER POT AND SAUCER

The true Spanish motif for Paltos, Walled Gardens and Porches. 6 or 10 inch sizes may be obtained in a variety of colors with plain or fluted edges.

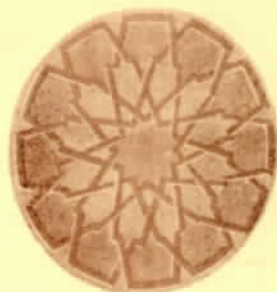
Cat. No. P-11



MOORISH GLAZED PLATE

Striking, yet simple in design, this beautiful plate radiates in color and attractiveness. Used either as an ornament or fruit dish.

Cat. No. P-31



MEXICAN - INDIAN POTTERY

The Ideal Garden Pottery — molded by hand from crude clay by native Mexican artisans. Variety of designs available.

Cat. No. IP-305

POTTERY LAMP BASES

Gracefully designed — suitable for any use. Lends charm to Reading Nook, Boudoir, or Drawing Room.

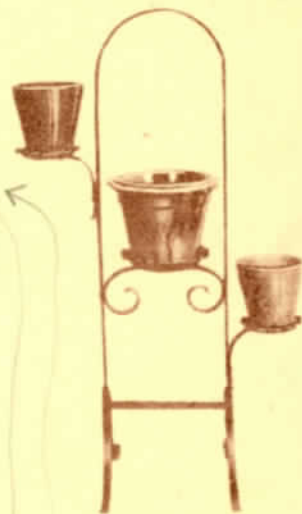
Cat. No. L-800



SMOKING STAND

An attractive, yet inexpensive Wrought Iron Smoker with Glazed Ash Tray in various colors. Other designs available.

Cat. No. SI-136



FERN HOLDER

A novel Fern Holder for the modern home. A distinctive Catalina design with three attractive clay pots.

Cat. No. FI-127